

Prepared by: Zieske Land Surveying, Inc. Address: Box 94, Windom, MN 56101 Phone: (507) 831-0100

**UNITED STATES PUBLIC LAND SURVEY CORNER CERTIFICATE FOR**

Land survey monuments situated in Section 16, Township 107 North, Range 39 West, of the Fifth Principal Meridian, Murray County, Minnesota..

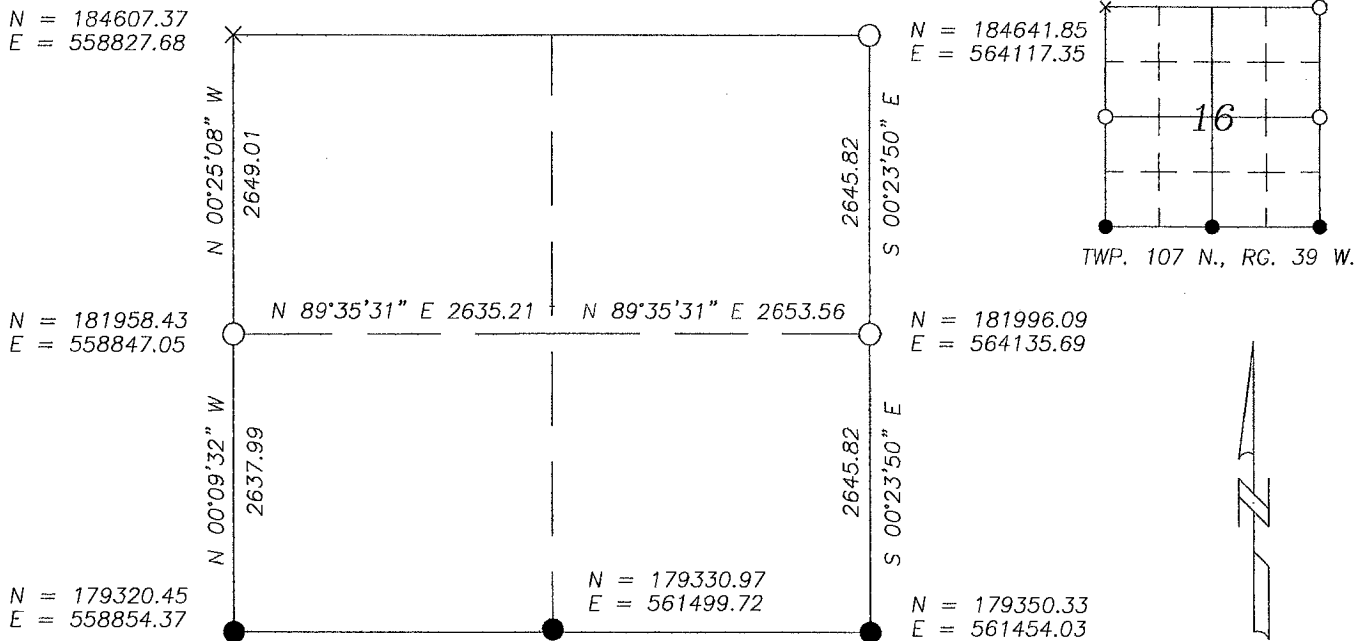
Previously recorded in N/A in County Recorder's Office.

(Show reason for preparing this certificate, the evidence and detailed procedure used in establishing the corner position & monumentation found or placed.)  
 MONUMENT DESCRIPTION AND REMARKS: On November 6, 2013 we dug with backhoe for NE Corner & found a 6" X 10" stone 2.6' below surface at centerline of intersection. County Highway records show no information for corner. I accepted stone as true corner & set 5/8" Iron Stake with survey cap 23008 over top center of stone. Also dug with backhoe for East 1/4 Corner & found no evidence of corner. County records show no information for corner. I therefore set a 5/8" Iron stake midway & online between NE & SE corners as per PLS Instructions. I also set a survey marker with cap 23008 at West 1/4 Corner at centerline of County Highway Number 42 in line with fence East as accepted & occupied line.

MURRAY COUNTY COORDINATES

PLAN-VIEW

NAD-83 (2007)



I hereby certify that this land survey, plan, or report was prepared by me and under my direct supervision and that I am a duly licensed Land Surveyor under the laws of the state of Minnesota.



Corners	Section	Township	Range
W 1/4	16	107	39
E 1/4	16	107	39
NE	16	107	39

Signature Perry L. Zieske Typed or Printed Name: Perry L. Zieske  
 Date 12-3-13 Reg. No.: 23008

Jamie V. Johnson DEC 5 2013